



# Carmelite Highlights

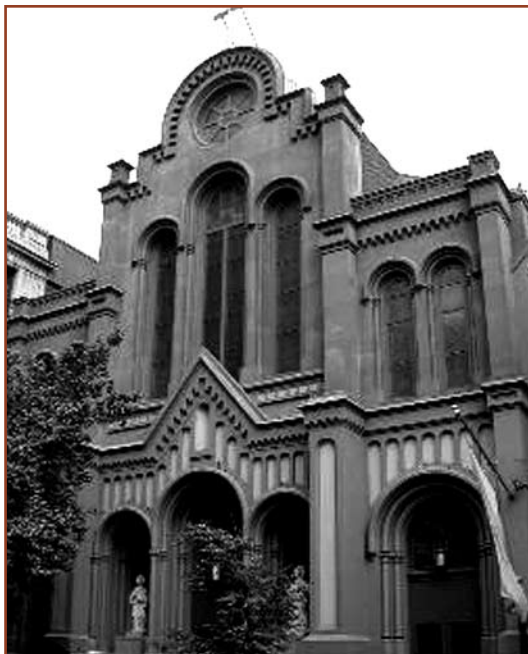
National Shrine of Our Lady of Mount Carmel™

## Carmelites Displaced in NYC, Ministry at Bellevue Ends

Very Reverend Michael Kissane, O. Carm., Provincial of the Carmelites of the Province of St. Elias, received word on May 1, 2007, that the Archdiocese of New York decided to appoint an Archdiocesan priest as Pastor of Our Lady of the Scapular-St. Stephen's Parish.

Because of this decision, the Carmelites will no longer staff Our Lady of the Scapular-St. Stephen's Parish and Bellevue Hospital. The Carmelites have served there since 1889 when the first Carmelites arrived from Ireland to serve the Irish immigrants of the Lower East side of Manhattan.

This decision by the Archdiocese is part of an overall plan that the Archdiocese of New York has for the Lower East side. The Carmelites left on July 1.



*Our Lady of the Scapular-St. Stephen's Church on 28th Street in New York City.*

The Carmelites first lived in and staffed Our Lady of the Scapular Parish, which was located on 28th Street between First and Second Avenues. Since the beginning, the Carmelites have provided Catholic chaplains for Bellevue Hospital – the oldest public hospital in the United

*(continued on the next page)*

States and one of the busiest in the City of New York.

In the early 1980s, the decision was made to combine Our Lady of the Scapular with St. Stephen's Parish on 29th Street off Lexington Avenue. The Carmelites then continued to serve at the newly created parish of Our Lady of the Scapular-St. Stephen's.

Eventually, the old Our Lady of the Scapular was torn down and the land sold for development. Much of the funds from this sale of land went toward needed repairs and renovation at the newly created parish and toward maintaining the ministry there over the years.

This Romanesque Revival-style church, built in 1854 to the designs of architect James Renwick, Jr., is an example of robust architecture that set the pace for the Victorian Romanesque. Equally important is the church's painted interior decorative scheme that was executed after the Civil War by the renowned artist, Constantine Brumidi (1805-1880), considered the last Master of the Italian

Baroque tradition.

Inside, plastered cast-iron columns with elaborate foliated capitals support multi-ribbed vaulting. The nave is lit by over 100 figurative painted stained glass windows by Meyer of Munich installed in the 1860s.

The church is nationally significant for its decorative scheme commissioned in 1866 from Brumidi, consisting of a huge mural of the Crucifixion over the High Altar, 45 murals and paintings around the walls, and a scheme of architectural illusion, called *trompe l'oeil*. Brumidi is renowned for his extensive murals in the U.S. Capitol that were recently restored.

As part of the Archdiocesan realignment plan, the Archdiocese decided to close down Sacred Hearts of Jesus and Mary Parish a few blocks from Our Lady of the Scapular-St. Stephen's on East 33rd Street. A small chapel is presently being built where the old church once stood. Sacred Hearts of Jesus and Mary Parish has been merged with Our Lady of the Scapular-St. Stephen's.

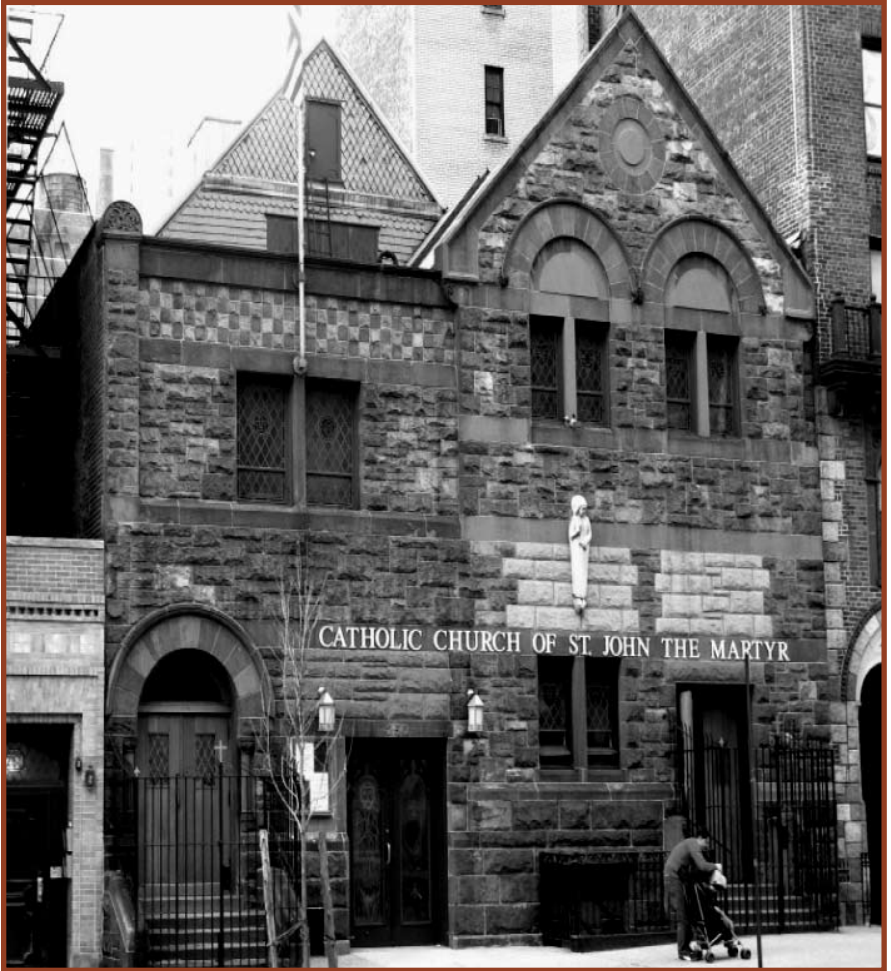
---

Much of the land where the old Sacred Hearts of Jesus and Mary once stood has been sold to a developer.

The Carmelites were offered St. John the Martyr Parish, a parish on East 72nd Street, a few blocks from Central Park. After

reviewing extensive data on the parish, the Provincial Council decided to accept this offer.

The transition out of Our Lady of the Scapular-St. Stephen's and into St. John the Martyr took place in July 2007.



*St. John the Martyr Parish, the Carmelite Friars' new home in Manhattan.*

## LETTER FROM FR. PAUL DENAULT, O. CARM.

Dear Friend of the Carmelites,

I am sure you share my sadness in reading of the changes faced by our Friars in New York City this past summer. It is very difficult to leave one's home and to say good-bye to a 118-year-old tradition of serving at Bellevue Hospital.

While the news is understandably unwelcome, it does serve as a reminder that we all face unforeseen problems in our lives. How we react is a reflection of our character and a measure of our success or failure.

I am pleased to report that the Friars displaced from Our Lady of the Scapular-St. Stephen's have settled into their new home at St. John the Martyr on East 72nd Street.

Weekend Mass attendance at St. John the Martyr is approximately 1,000 people—comprised mainly of the elderly and young adults. A number of institutions such as Marymount Manhattan College, New York Hospital and Mary Manning Walsh Nursing Home are also served by the parish.

Please keep your entire Carmelite family and all those served by our ministries in your prayers... especially those Friars most directly affected by these developments.

Gratefully yours,



Fr. Paul Denault, O. Carm.

### *National Shrine of Our Lady of Mount Carmel Regularly Scheduled Events*

#### **Monday - Friday**

Mass, 11:30 a.m.

#### **Saturday**

Confession, 11 a.m. - noon

#### **Sunday**

Mass, noon

For more information on Days of Prayer or bus trips, call (845) 343-1879 or email [nsolmc@warwick.net](mailto:nsolmc@warwick.net).

**Carmelite Highlights** is published by the Carmelite Friars of the Province of Saint Elias to provide information for those interested in Carmelite ministries and spirituality.

Communications should be referred to:  
**Editor/Carmelite Highlights**



#### **Carmelite Friars**

National Shrine of Our Lady of Mount Carmel<sup>®</sup>  
P.O. Box 868 • Carmelite Drive  
Middletown, NY 10940-0868 • (845) 344-0876  
(Calling Hours: 8:30 a.m.-4:30 p.m. EST Mon.-Fri.)  
[www.carmelitedevelopment.org](http://www.carmelitedevelopment.org)